

M5 Junction 10 Improvements Scheme

Environmental Statement

Appendix 10.8

Geology and Soils chapter figures

TR010063 - APP 6.15

Regulation 5 (2) (a)

Planning Act 2008

Infrastructure Planning (Applications: Prescribed Forms and Procedure) Regulations 2009

Volume 6
October 2024

THIS PAGE IS LEFT INTENTIONALLY BLANK

Infrastructure Planning Planning Act 2008

The Infrastructure Planning (Applications: Prescribed Forms and Procedure) Regulations 2009

M5 Junction 10 Improvements Scheme Development Consent Order 202[x]

6.15 Environmental Statement

Appendix 10.8

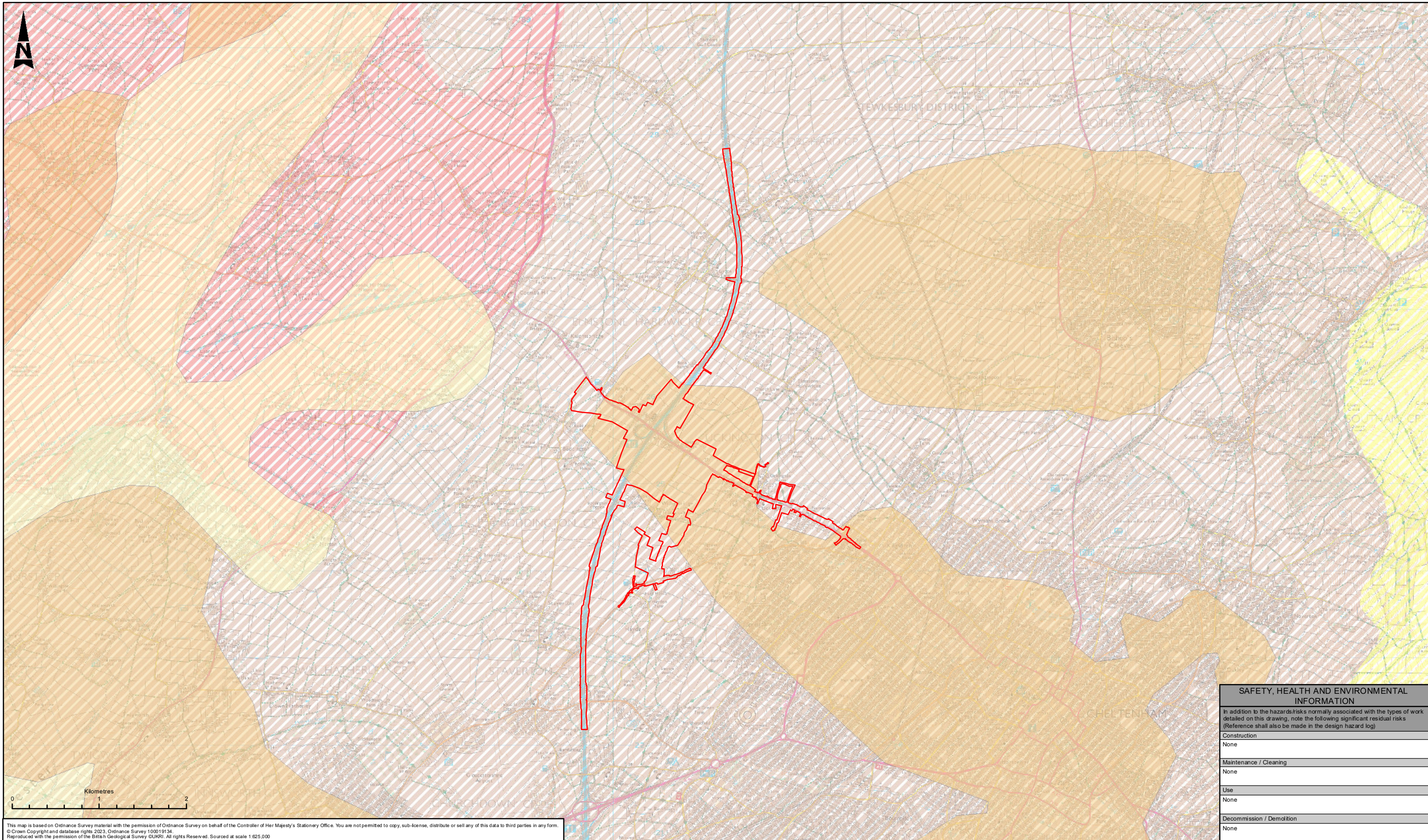
Geology and Soils chapter figures (Clean)

Regulation Number:	Regulation 5(2)(a)
Planning Inspectorate Scheme Reference	TR010063
Application Document Reference	TR010063/APP/6.15
Author:	M5 Junction 10 Improvements Scheme Project Team

Version	Date	Status of Version
Rev 0	December 2023	DCO Application
Rev 1	October 2024	Deadline 5

1. Schedule of figures included in this application document

Figure reference	Document title	Sheet	Document number	Revision
10-1	Geology of the study area	1 of 1	GCCM5J10-ATK-EGT-ZZ-GS-GI-000002	0
10-2	Ground investigation location plan	1 of 8	GCCM5J10-ATK-EGT-ZZ-GS-GI-000003	0
10-2	Ground investigation location plan	2 of 8	GCCM5J10-ATK-EGT-ZZ-GS-GI-000003	0
10-2	Ground investigation location plan	3 of 8	GCCM5J10-ATK-EGT-ZZ-GS-GI-000003	0
10-2	Ground investigation location plan	4 of 8	GCCM5J10-ATK-EGT-ZZ-GS-GI-000003	0
10-2	Ground investigation location plan	5 of 8	GCCM5J10-ATK-EGT-ZZ-GS-GI-000003	0
10-2	Ground investigation location plan	6 of 8	GCCM5J10-ATK-EGT-ZZ-GS-GI-000003	0
10-2	Ground investigation location plan	7 of 8	GCCM5J10-ATK-EGT-ZZ-GS-GI-000003	0
10-2	Ground investigation location plan	8 of 8	GCCM5J10-ATK-EGT-ZZ-GS-GI-000003	0
10-3	Agricultural land classification	1 of 1	GCCM5J10-ATK-EGT-ZZ-GS-GI-000001	0
10-3a	Agricultural land classification in the surrounding area	1 of 1	GCCM5J10-ATK-EGT-ZZ-GS-GI-000001	0



This map is based on Ordnance Survey material with the permission of Ordnance Survey on behalf of the Controller of Her Majesty's Stationery Office. You are not permitted to copy, sub-licence, distribute or sell any of this data to third parties in any form.
 © Crown Copyright and database rights 2023, Ordnance Survey 100019134.
 Reproduced with the permission of the British Geological Survey GUKRI. All rights Reserved. Sourced at scale 1:625,000

SAFETY, HEALTH AND ENVIRONMENTAL INFORMATION	
In addition to the hazards/risks normally associated with the types of work detailed on this drawing, note the following significant residual risks (Reference shall also be made in the design hazard log)	
Construction	None
Maintenance / Cleaning	None
Use	None
Decommission / Demolition	None

LEGEND	
	ORDER LIMITS
BEDROCK GEOLOGY	
	INFERIOR OOLITE GROUP - LIMESTONE, SANDSTONE, SILTSTONE AND MUDSTONE
	LIAS GROUP - MUDSTONE, SILTSTONE, LIMESTONE AND SANDSTONE
	TRIASSIC ROCKS (UNDIFFERENTIATED) - MUDSTONE, SILTSTONE AND SANDSTONE
SUPERFICIAL DEPOSITS	
	RIVER TERRACE DEPOSITS (UNDIFFERENTIATED) - SAND AND GRAVEL
	ALLUVIUM - CLAY, SILT AND SAND

NOTE: This map is based on the 1:625,000 scale British Geological Survey (BGS) dataset which is a larger scale than that used in the baseline assessment. It should be noted that the geology has been generalised and does not reflect the geological sub-divisions which have been mapped at a more local scale. Further detail is available at the BGS reference provided within the baseline section of the report and the BGS link below.
<https://www.bgs.ac.uk/map-viewers/geoidex-onshore/>

Description	Status	Revision	Drawn	Checked	Reviewed	Authorised	Issue Date
PUBLISHED	A1		JM	MB	CC	LJ	22/08/23

ATKINS
 Member of the SNC-Lavalin Group
 5th Floor, Block 5
 Shire Hall
 Bearland
 Gloucester
 GL1 2TH
 Tel: 08000 514 514
 Copyright © Atkins Limited (2023) www.atkinsglobal.com

Gloucestershire
 COUNTY COUNCIL

Project Title		M5 Junction 10 Improvements Scheme	
Drawing Title		FIGURE 10-1 GEOLOGY OF THE STUDY AREA	
Drawing Number		GCCM5J10 - ATK - EGT ZZ - GS - GI - 000002	
Original Size: A3	Scale: 1:40,000	Project Ref: 5214106	Sheet: 1 of 1 Rev: P01



This map is based on Ordnance Survey material with the permission of Ordnance Survey on behalf of the Controller of Her Majesty's Stationery Office. You are not permitted to copy, sub-licence, distribute or sell any of this data to third parties in any form.
 © Crown Copyright and database rights 2023, Ordnance Survey 100019134.
 Aerial Imagery: Contains OS data © Crown Copyright and database right 2020, Source: Esri, Maxar, Earthstar Geographics, and the GIS User Community

SAFETY, HEALTH AND ENVIRONMENTAL INFORMATION	
In addition to the hazards/risks normally associated with the types of work detailed on this drawing, note the following significant residual risks (Reference shall also be made in the design hazard log)	
Construction	None
Maintenance / Cleaning	None
Use	None
Decommission / Demolition	None

LEGEND	
	ORDER LIMITS
GI LOCATIONS	
	BOREHOLE (DYNAMIC SAMPLE / ROTARY CORE)
	BOREHOLE (DYNAMIC SAMPLE)
	TRIAL PIT
	INSPECTION PIT
	SURFACE WATER SAMPLE
	WINDOW SAMPLE

Description	Status	Revision	Drawn	Checked	Reviewed	Authorised	Issue Date
PUBLISHED							

ATKINS
 Member of the SNC-Lavalin Group
 5th Floor, Block 5
 Shire Hall
 Bearland
 Gloucester
 GL1 2TH
 Tel: 08000 514 514
 Copyright © Atkins Limited (2023) www.atkinsglobal.com

Gloucestershire
 COUNTY COUNCIL

Project Title		M5 Junction 10 Improvements Scheme	
Drawing Title		FIGURE 10-2 GROUND INVESTIGATION LOCATION PLAN	
Drawing Number		GCCM5J10 - ATK - EGT ZZ - GS - GI - 000003	
Original Size: A3	Scale: 1:5,000	Project Ref: 5214106	Sheet: 1 of 8 Rev: P01



This map is based on Ordnance Survey material with the permission of Ordnance Survey on behalf of the Controller of Her Majesty's Stationery Office. You are not permitted to copy, sub-licence, distribute or sell any of this data to third parties in any form.
 © Crown Copyright and database rights 2023, Ordnance Survey 100019134.
 Aerial Imagery: Contains OS data © Crown Copyright and database right 2020, Source: Esri, Maxar, Earthstar Geographics, and the GIS User Community

SAFETY, HEALTH AND ENVIRONMENTAL INFORMATION	
In addition to the hazards/risks normally associated with the types of work detailed on this drawing, note the following significant residual risks (Reference shall also be made in the design hazard log)	
Construction	None
Maintenance / Cleaning	None
Use	None
Decommission / Demolition	None

LEGEND	
	ORDER LIMITS
GI LOCATIONS	
	BOREHOLE (DYNAMIC SAMPLE / ROTARY CORE)
	BOREHOLE (DYNAMIC SAMPLE)
	TRIAL PIT
	INSPECTION PIT
	SURFACE WATER SAMPLE
	WINDOW SAMPLE

Description	Status	Revision	Drawn	Checked	Reviewed	Authorised	Issue Date
PUBLISHED							

ATKINS
 Member of the SNC-Lavalin Group
 5th Floor, Block 5
 Shire Hall
 Bearland
 Gloucester
 GL1 2TH
 Tel: 08000 514 514
 Copyright © Atkins Limited (2023) www.atkinsglobal.com

Gloucestershire
 COUNTY COUNCIL

Project Title		M5 Junction 10 Improvements Scheme	
Drawing Title		FIGURE 10-2 GROUND INVESTIGATION LOCATION PLAN	
Drawing Number		GCCM5J10 - ATK - EGT ZZ - GS - GI - 000003	
Original Size: A3	Scale: 1:5,000	Project Ref: 5214106	Sheet: 2 of 8 Rev: P01



This map is based on Ordnance Survey material with the permission of Ordnance Survey on behalf of the Controller of Her Majesty's Stationery Office. You are not permitted to copy, sub-licence, distribute or sell any of this data to third parties in any form.
 © Crown Copyright and database rights 2023, Ordnance Survey 100019134.
 Aerial Imagery: Contains OS data © Crown Copyright and database right 2020, Source: Esri, Maxar, Earthstar Geographics, and the GIS User Community

SAFETY, HEALTH AND ENVIRONMENTAL INFORMATION	
In addition to the hazards/risks normally associated with the types of work detailed on this drawing, note the following significant residual risks (Reference shall also be made in the design hazard log)	
Construction	None
Maintenance / Cleaning	None
Use	None
Decommission / Demolition	None

LEGEND	
	ORDER LIMITS
GI LOCATIONS	
	BOREHOLE (DYNAMIC SAMPLE / ROTARY CORE)
	BOREHOLE (DYNAMIC SAMPLE)
	TRIAL PIT
	INSPECTION PIT
	SURFACE WATER SAMPLE
	WINDOW SAMPLE

Description		Drawing Suitability	Status	Project Title
PUBLISHED		PUBLISHED	A1	M5 Junction 10 Improvements Scheme
Status Revision Drawn Checked Reviewed Authorised Issue Date		Drawing Title		
Description		5th Floor, Block 5 Shire Hall Bearland Gloucester GL1 2TH Tel: 08000 514 514 Copyright © Atkins Limited (2023) www.atkinsglobal.com		
Status Revision Drawn Checked Reviewed Authorised Issue Date		Drawing Number		
Description		Project: GCCM5J10 - ATK - EGT Originator: ZZ - GS - GI - 000003 Volume: 3 of 8		
Status Revision Drawn Checked Reviewed Authorised Issue Date		Original Size: A3 Scale: 1:5,000 Project Ref: 5214106 Sheet: 3 of 8 Rev: P01		



This map is based on Ordnance Survey material with the permission of Ordnance Survey on behalf of the Controller of Her Majesty's Stationery Office. You are not permitted to copy, sub-licence, distribute or sell any of this data to third parties in any form.
 © Crown Copyright and database rights 2023, Ordnance Survey 100019134.
 Aerial Imagery: Contains OS data © Crown Copyright and database right 2020, Source: Esri, Maxar, Earthstar Geographics, and the GIS User Community

SAFETY, HEALTH AND ENVIRONMENTAL INFORMATION	
In addition to the hazards/risks normally associated with the types of work detailed on this drawing, note the following significant residual risks (Reference shall also be made in the design hazard log)	
Construction	None
Maintenance / Cleaning	None
Use	None
Decommission / Demolition	None

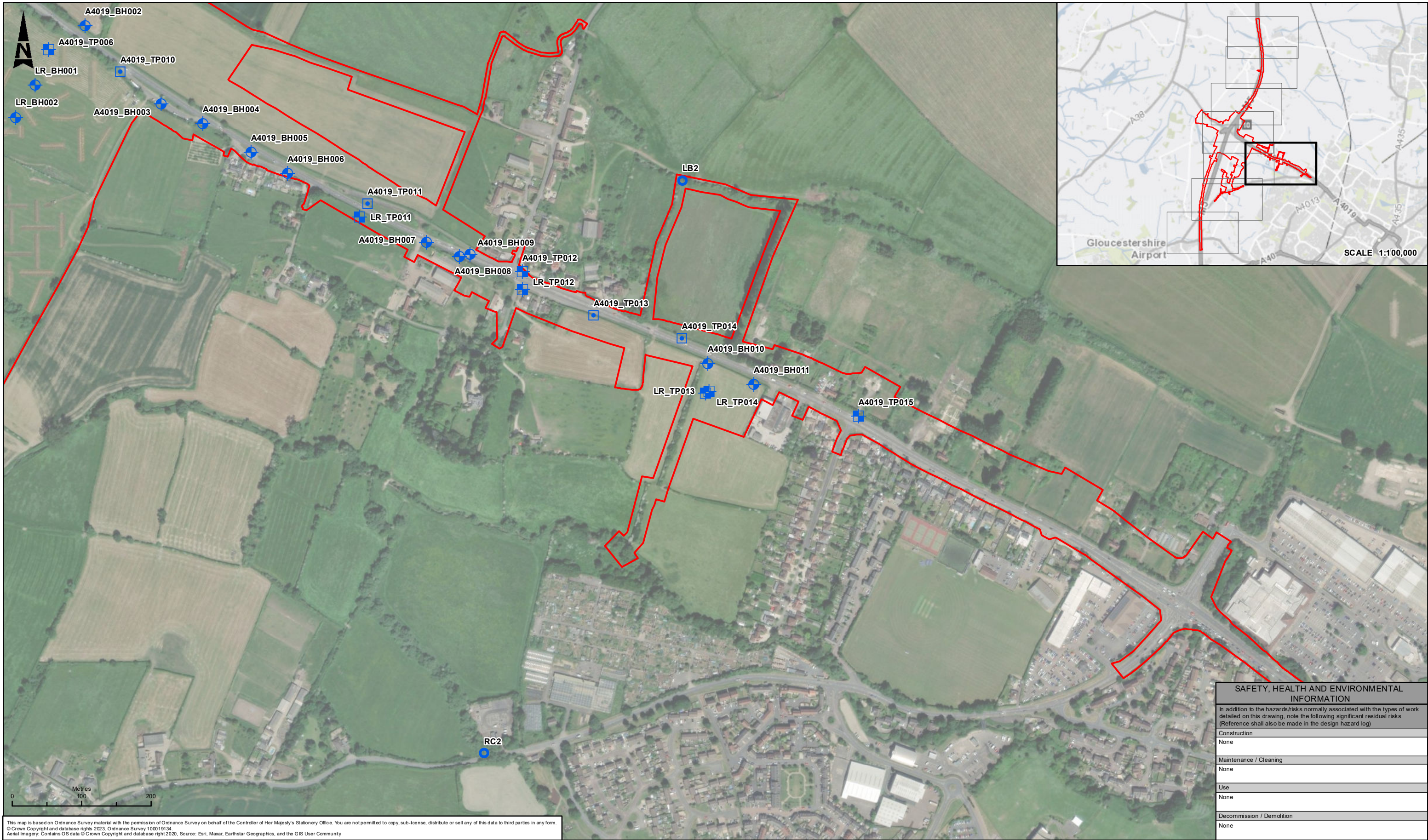
LEGEND	
	ORDER LIMITS
GI LOCATIONS	
	BOREHOLE (DYNAMIC SAMPLE / ROTARY CORE)
	BOREHOLE (DYNAMIC SAMPLE)
	TRIAL PIT
	INSPECTION PIT
	SURFACE WATER SAMPLE
	WINDOW SAMPLE

Description	Status	Revision	Drawn	Checked	Reviewed	Authorised	Issue Date
PUBLISHED							

ATKINS
 Member of the SNC-Lavalin Group
 5th Floor, Block 5
 Shire Hall
 Bearland
 Gloucester
 GL1 2TH
 Tel: 08000 514 514
 Copyright © Atkins Limited (2023) www.atkinsglobal.com

Gloucestershire COUNTY COUNCIL

Project Title		M5 Junction 10 Improvements Scheme	
Drawing Title		FIGURE 10-2 GROUND INVESTIGATION LOCATION PLAN	
Drawing Number		Project: GCCM5J10 - ATK - EGT ZZ - GS - GI - 000003	
Original Size: A3	Scale: 1:5,000	Project Ref: 5214106	Sheet: 4 of 8 Rev: P01



This map is based on Ordnance Survey material with the permission of Ordnance Survey on behalf of the Controller of Her Majesty's Stationery Office. You are not permitted to copy, sub-licence, distribute or sell any of this data to third parties in any form.
 © Crown Copyright and database rights 2023, Ordnance Survey 100019134.
 Aerial Imagery: Contains OS data © Crown Copyright and database right 2020, Source: Esri, Maxar, Earthstar Geographics, and the GIS User Community

SAFETY, HEALTH AND ENVIRONMENTAL INFORMATION	
In addition to the hazards/risks normally associated with the types of work detailed on this drawing, note the following significant residual risks (Reference shall also be made in the design hazard log)	
Construction	None
Maintenance / Cleaning	None
Use	None
Decommission / Demolition	None

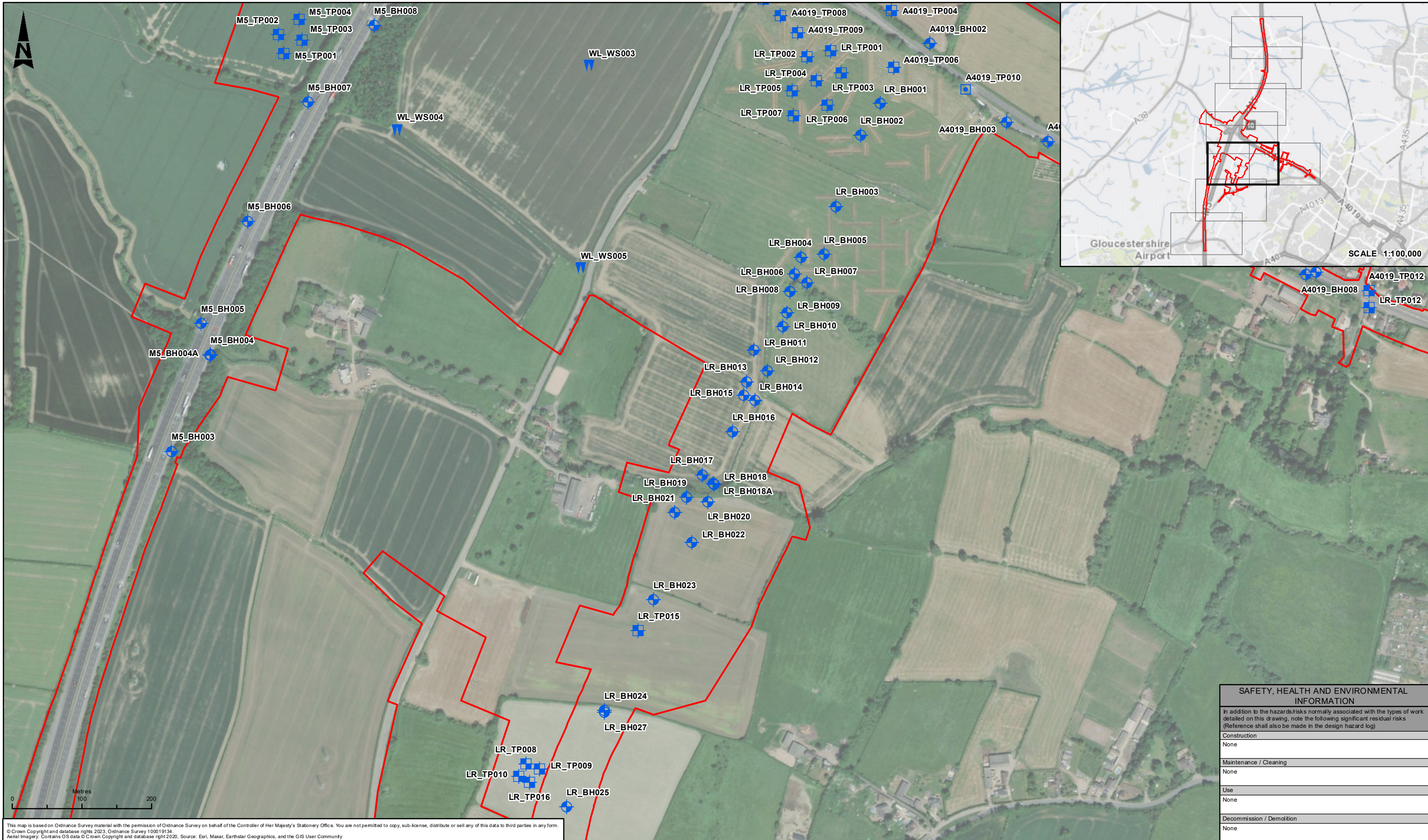
LEGEND	
	ORDER LIMITS
GI LOCATIONS	
	BOREHOLE (DYNAMIC SAMPLE / ROTARY CORE)
	BOREHOLE (DYNAMIC SAMPLE)
	TRIAL PIT
	INSPECTION PIT
	SURFACE WATER SAMPLE
	WINDOW SAMPLE

Description	Status	Revision	Drawn	Checked	Reviewed	Authorised	Issue Date
PUBLISHED							

ATKINS
 Member of the SNC-Lavalin Group
 5th Floor, Block 5
 Shire Hall
 Bearland
 Gloucester
 GL1 2TH
 Tel: 08000 514 514
 Copyright © Atkins Limited (2023) www.atkinsglobal.com

Gloucestershire COUNTY COUNCIL

Project Title		M5 Junction 10 Improvements Scheme	
Drawing Title		FIGURE 10-2 GROUND INVESTIGATION LOCATION PLAN	
Drawing Number		Project: GCCM5J10 - ATK - EGT ZZ - GS - GI - 000003	
Original Size: A3	Scale: 1:5,000	Project Ref: 5214106	Sheet: 5 of 8 Rev: P01



This map is based on Ordnance Survey material with the permission of Ordnance Survey on behalf of the Controller of Her Majesty's Stationery Office. You are not permitted to copy, sub-licence, distribute or sell any of this data to third parties in any form.
 © Crown Copyright and database rights 2023, Ordnance Survey 100019134.
 Aerial Imagery: Contains OS data © Crown Copyright and database right 2020, Source: Esri, Maxar, Earthstar Geographics, and the GIS User Community

LEGEND	
	ORDER LIMITS
GI LOCATIONS	
	BOREHOLE (DYNAMIC SAMPLE / ROTARY CORE)
	BOREHOLE (DYNAMIC SAMPLE)
	TRIAL PIT
	INSPECTION PIT
	SURFACE WATER SAMPLE
	WINDOW SAMPLE

Description	Status	Revision	Drawn	Checked	Reviewed	Authorised	Issue Date
PUBLISHED							
PUBLISHED							
PUBLISHED							
PUBLISHED							
PUBLISHED							
PUBLISHED							

ATKINS
 Member of the SNC-Lavalin Group
 5th Floor, Block 5
 Shire Hall
 Bearland
 Gloucester
 GL1 2TH
 Tel: 08000 514 514
 Copyright © Atkins Limited (2023) www.atkinsglobal.com

Gloucestershire
 COUNTY COUNCIL

SAFETY, HEALTH AND ENVIRONMENTAL INFORMATION	
In addition to the hazards/risks normally associated with the types of work detailed on this drawing, note the following significant residual risks (Reference shall also be made in the design hazard log)	
Construction	None
Maintenance / Cleaning	None
Use	None
Decommission / Demolition	None

Project Title		M5 Junction 10 Improvements Scheme	
Drawing Title		FIGURE 10-2 GROUND INVESTIGATION LOCATION PLAN	
Drawing Number		Project: GCCM5J10 - ATK - EGT Originator: ZZ - GS - GI - 000003 Volume: 6 of 8	
Original Size: A3	Scale: 1:5,000	Project Ref: 5214106	Rev: P01



This map is based on Ordnance Survey material with the permission of Ordnance Survey on behalf of the Controller of Her Majesty's Stationery Office. You are not permitted to copy, sub-licence, distribute or sell any of this data to third parties in any form.
 © Crown Copyright and database rights 2023, Ordnance Survey 100019134.
 Aerial Imagery: Contains OS data © Crown Copyright and database right 2020, Source: Esri, Maxar, Earthstar Geographics, and the GIS User Community

SAFETY, HEALTH AND ENVIRONMENTAL INFORMATION	
In addition to the hazards/risks normally associated with the types of work detailed on this drawing, note the following significant residual risks (Reference shall also be made in the design hazard log)	
Construction	None
Maintenance / Cleaning	None
Use	None
Decommission / Demolition	None

LEGEND	
	ORDER LIMITS
GI LOCATIONS	
	BOREHOLE (DYNAMIC SAMPLE / ROTARY CORE)
	BOREHOLE (DYNAMIC SAMPLE)
	TRIAL PIT
	INSPECTION PIT
	SURFACE WATER SAMPLE
	WINDOW SAMPLE

Description		Drawing Suitability		Status		Project Title			
Status	Revision	Drawn	Checked	Reviewed	Authorised	Issue Date	PUBLISHED	A1	M5 Junction 10 Improvements Scheme
Description		Drawing Suitability		Status		Project Title			
Status	Revision	Drawn	Checked	Reviewed	Authorised	Issue Date	ATKINS	A1	M5 Junction 10 Improvements Scheme
Description		Drawing Suitability		Status		Project Title			
Status	Revision	Drawn	Checked	Reviewed	Authorised	Issue Date	Member of the SNC-Lavalin Group	A1	M5 Junction 10 Improvements Scheme
Description		Drawing Suitability		Status		Project Title			
Status	Revision	Drawn	Checked	Reviewed	Authorised	Issue Date	5th Floor, Block 5 Shire Hall Bearland Gloucester GL1 2TH	A1	M5 Junction 10 Improvements Scheme
Description		Drawing Suitability		Status		Project Title			
Status	Revision	Drawn	Checked	Reviewed	Authorised	Issue Date	Tel: 08000 514 514	A1	M5 Junction 10 Improvements Scheme
Description		Drawing Suitability		Status		Project Title			
Status	Revision	Drawn	Checked	Reviewed	Authorised	Issue Date	Copyright © Atkins Limited (2023) www.atkinsglobal.com	A1	M5 Junction 10 Improvements Scheme
Description		Drawing Suitability		Status		Project Title			
Status	Revision	Drawn	Checked	Reviewed	Authorised	Issue Date	Gloucestershire COUNTY COUNCIL	A1	M5 Junction 10 Improvements Scheme
Description		Drawing Suitability		Status		Project Title			
Status	Revision	Drawn	Checked	Reviewed	Authorised	Issue Date	Client	A1	M5 Junction 10 Improvements Scheme
Description		Drawing Suitability		Status		Project Title			
Status	Revision	Drawn	Checked	Reviewed	Authorised	Issue Date	Project	A1	M5 Junction 10 Improvements Scheme
Description		Drawing Suitability		Status		Project Title			
Status	Revision	Drawn	Checked	Reviewed	Authorised	Issue Date	Originator	A1	M5 Junction 10 Improvements Scheme
Description		Drawing Suitability		Status		Project Title			
Status	Revision	Drawn	Checked	Reviewed	Authorised	Issue Date	Volume	A1	M5 Junction 10 Improvements Scheme
Description		Drawing Suitability		Status		Project Title			
Status	Revision	Drawn	Checked	Reviewed	Authorised	Issue Date	Project	A1	M5 Junction 10 Improvements Scheme
Description		Drawing Suitability		Status		Project Title			
Status	Revision	Drawn	Checked	Reviewed	Authorised	Issue Date	Location	A1	M5 Junction 10 Improvements Scheme
Description		Drawing Suitability		Status		Project Title			
Status	Revision	Drawn	Checked	Reviewed	Authorised	Issue Date	Type	A1	M5 Junction 10 Improvements Scheme
Description		Drawing Suitability		Status		Project Title			
Status	Revision	Drawn	Checked	Reviewed	Authorised	Issue Date	Rate	A1	M5 Junction 10 Improvements Scheme
Description		Drawing Suitability		Status		Project Title			
Status	Revision	Drawn	Checked	Reviewed	Authorised	Issue Date	Number	A1	M5 Junction 10 Improvements Scheme
Description		Drawing Suitability		Status		Project Title			
Status	Revision	Drawn	Checked	Reviewed	Authorised	Issue Date	Rev	A1	M5 Junction 10 Improvements Scheme
Description		Drawing Suitability		Status		Project Title			
Status	Revision	Drawn	Checked	Reviewed	Authorised	Issue Date	Scale	A1	M5 Junction 10 Improvements Scheme
Description		Drawing Suitability		Status		Project Title			
Status	Revision	Drawn	Checked	Reviewed	Authorised	Issue Date	Project Ref	A1	M5 Junction 10 Improvements Scheme
Description		Drawing Suitability		Status		Project Title			
Status	Revision	Drawn	Checked	Reviewed	Authorised	Issue Date	Sheet	A1	M5 Junction 10 Improvements Scheme
Description		Drawing Suitability		Status		Project Title			
Status	Revision	Drawn	Checked	Reviewed	Authorised	Issue Date	Number	A1	M5 Junction 10 Improvements Scheme
Description		Drawing Suitability		Status		Project Title			
Status	Revision	Drawn	Checked	Reviewed	Authorised	Issue Date	Rev	A1	M5 Junction 10 Improvements Scheme

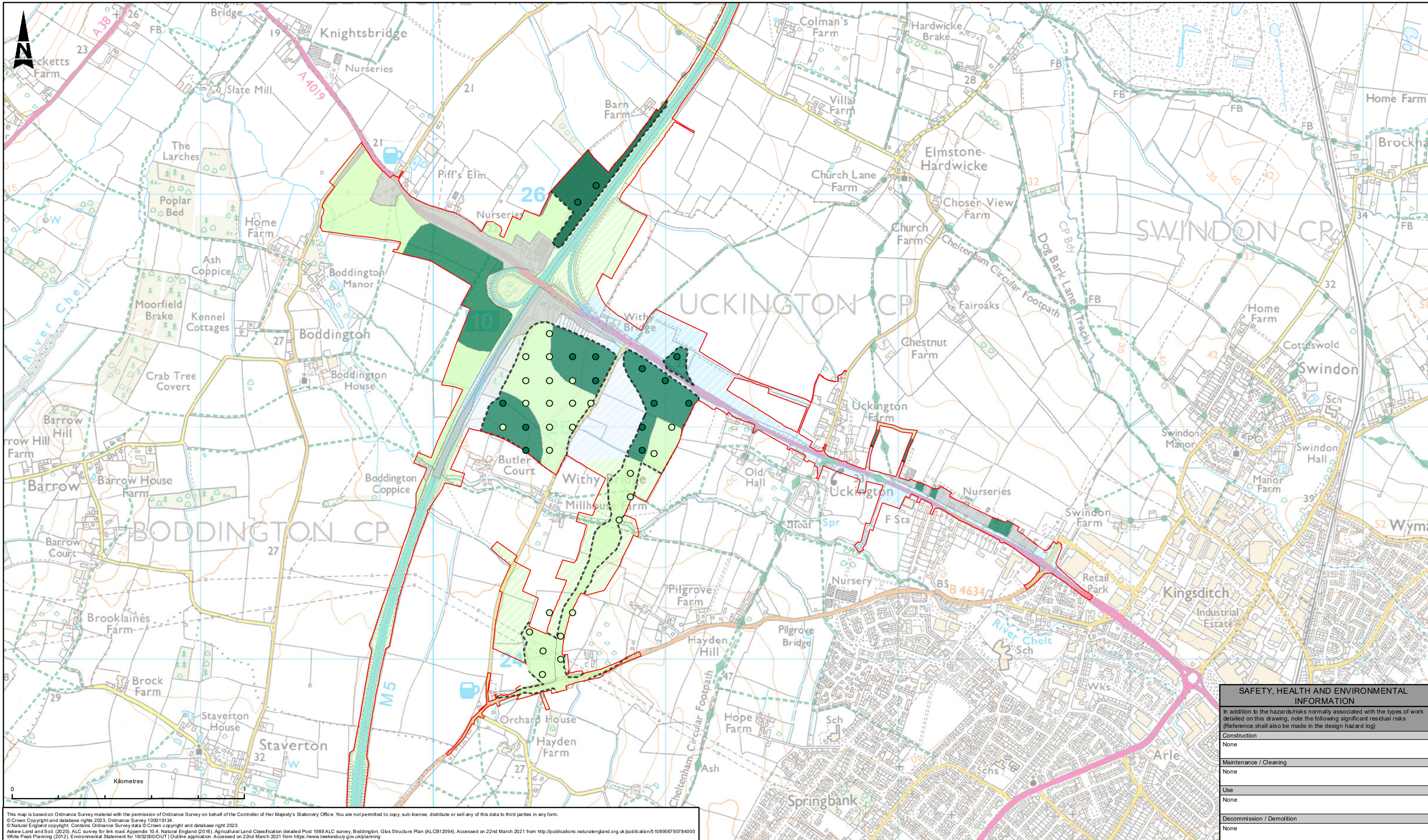


This map is based on Ordnance Survey material with the permission of Ordnance Survey on behalf of the Controller of Her Majesty's Stationery Office. You are not permitted to copy, sub-licence, distribute or sell any of this data to third parties in any form.
 © Crown Copyright and database rights 2023, Ordnance Survey 100019134.
 Aerial Imagery: Contains OS data © Crown Copyright and database right 2020, Source: Esri, Maxar, Earthstar Geographics, and the GIS User Community

SAFETY, HEALTH AND ENVIRONMENTAL INFORMATION	
In addition to the hazards/risks normally associated with the types of work detailed on this drawing, note the following significant residual risks (Reference shall also be made in the design hazard log)	
Construction	None
Maintenance / Cleaning	None
Use	None
Decommission / Demolition	None

LEGEND	
	ORDER LIMITS
GI LOCATIONS	
	BOREHOLE (DYNAMIC SAMPLE / ROTARY CORE)
	BOREHOLE (DYNAMIC SAMPLE)
	TRIAL PIT
	INSPECTION PIT
	SURFACE WATER SAMPLE
	WINDOW SAMPLE

Description		Drawing Suitability	Status	Project Title
PUBLISHED		PUBLISHED	A1	M5 Junction 10 Improvements Scheme
Status				Drawing Title
Revision		5th Floor, Block 5 Shire Hall Bearland Gloucester GL1 2TH Tel: 08000 514 514 Copyright © Atkins Limited (2023) www.atkinsglobal.com		FIGURE 10-2 GROUND INVESTIGATION LOCATION PLAN
Description				Drawing Number
Revision		Project: GCCM5J10 - ATK - EGT Originator: ZZ - GS - GI - 000003 Volume:		Location: 8 of 8 Scale: 1:5,000 Project Ref: 5214106 Rev: P01
Status		A1 Revision: P01 Drawn: JM Checked: MB Reviewed: CC Authorised: LJ Issue Date: 22/08/23		



This map is based on Ordnance Survey material with the permission of Ordnance Survey on behalf of the Controller of Her Majesty's Stationery Office. You are not permitted to copy, sub-licence, distribute or sell any of this data to third parties in any form.
 © Crown Copyright and database rights 2023. Ordnance Survey 100019134.
 © Natural England copyright. Contains Ordnance Survey data © Crown copyright and database right 2023.
 Askew Land and Soil (2020). ALC survey for link road Appendix 10.4. Natural England (2016). Agricultural Land Classification detailed Post 1988 ALC survey, Boddington, Gbs Structure Plan (ALCB12094). Accessed on 22nd March 2021 from <http://publications.naturalengland.org.uk/publication/5108965790784000>
 White Peak Planning (2012). Environmental Statement for 16/02/000/OUT | Outline application. Accessed on 22nd March 2021 from <https://www.tewkesbury.gov.uk/planning>

SAFETY, HEALTH AND ENVIRONMENTAL INFORMATION	
In addition to the hazards/risks normally associated with the types of work detailed on this drawing, note the following significant residual risks (Reference shall also be made in the design hazard log)	
Construction	None
Maintenance / Cleaning	None
Use	None
Decommission / Demolition	None

LEGEND

- ORDER LIMITS
- ALC SURVEY UNDERTAKEN AS PART OF THE SCHEME INCLUDED IN APPENDIX 10.4
- ALC SURVEY UNDERTAKEN DURING ELM LAKE DEVELOPMENT FROM WHITE PEAK PLANNING LTD ENVIRONMENTAL STATEMENT

*** WHERE NEITHER DOTTED OR DASHED LINES ARE SHOWN, LAND CLASSIFICATION GRADES ARE BASED ON THE NATURAL ENGLAND PROVISIONAL AND POST 1988 AGRICULTURAL LAND CLASSIFICATION**

SITE SURVEY HAND AUGER SAMPLE POINTS		AGRICULTURAL LAND CLASSIFICATION	
●	GRADE 3A	■	GRADE 1 - EXCELLENT QUALITY
○	GRADE 3B	■	GRADE 2 - VERY GOOD QUALITY
■	GRADE 3A - GOOD QUALITY	■	GRADE 3B - MODERATE QUALITY
■	GRADE 3B - MODERATE QUALITY	■	GRADE 4 - POOR QUALITY
■	GRADE 4 - POOR QUALITY	■	GRADE 5 - VERY POOR QUALITY
■	GRADE 5 - VERY POOR QUALITY	■	NOT SURVEYED
■	NOT SURVEYED	■	OTHER
■	OTHER		

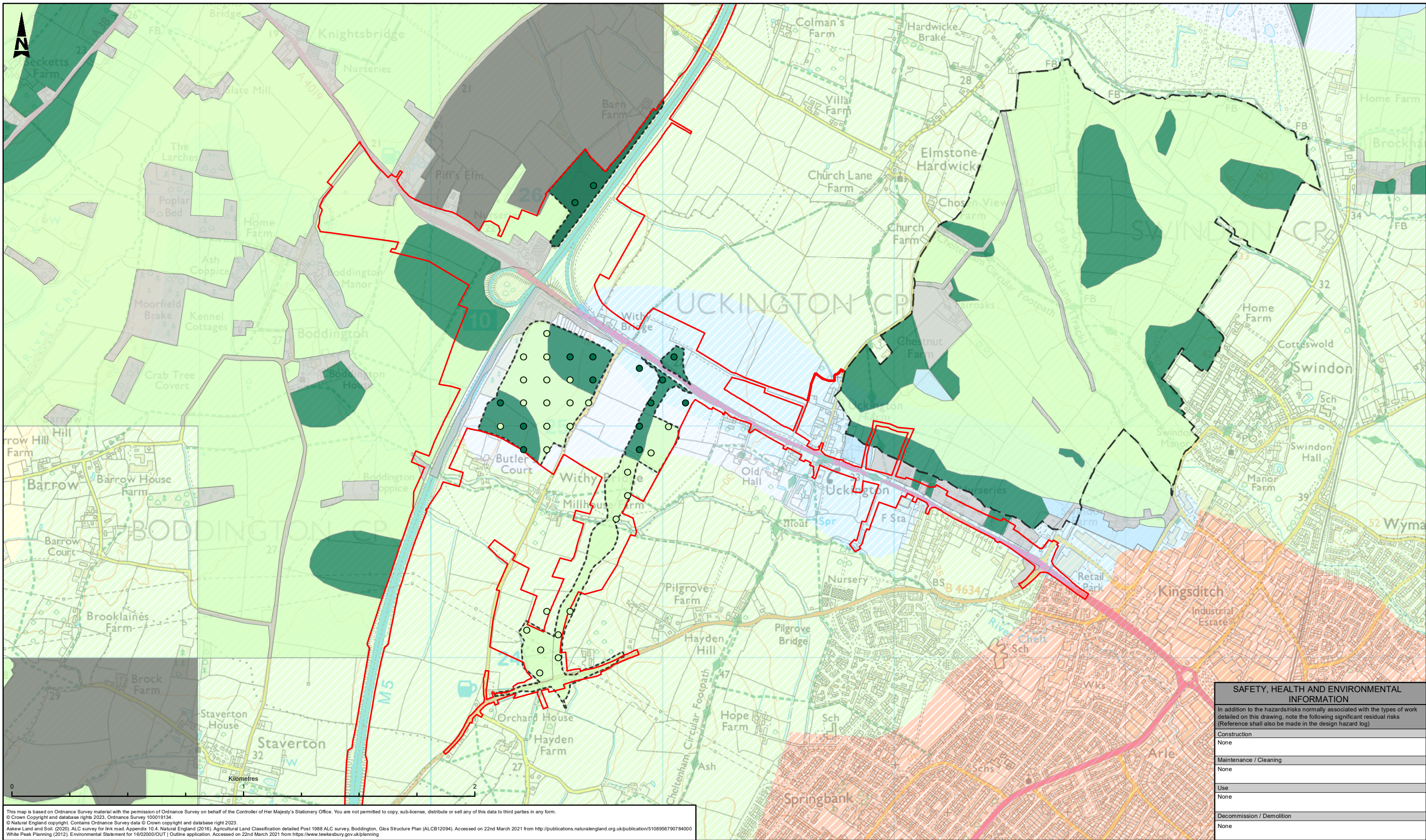
AGRICULTURAL LAND CLASSIFICATION GRADES 1, 2 AND 3A ARE BEST AND MOST VERSATILE

Description	Status	Revision	Drawn	Checked	Reviewed	Authorised	Issue Date
PUBLISHED	A1		JM	MB	CC	LJ	22/08/23

ATKINS
 Member of the SNC-Lavalin Group
 5th Floor, Block 5
 Shire Hall
 Bearland
 Gloucester
 GL1 2TH
 Tel: 08000 514 514
 www.atkinsglobal.com

gloucestershire
 COUNTY COUNCIL

Project		Originator		Volume	
GCCM5J10 - ATK - EGT		ZZ - GS - GI - 000001			
Location	Type	Rate	Number	Rev.	
A3	1:15,000	5214106	1 of 1	P02	



This map is based on Ordnance Survey material with the permission of Ordnance Survey on behalf of the Controller of Her Majesty's Stationery Office. You are not permitted to copy, sub-license, distribute or sell any of this data to third parties in any form.
 © Crown Copyright and database rights 2023, Ordnance Survey 100019134.
 © Natural England copyright. Contains Ordnance Survey data © Crown copyright and database right 2023.
 Askev Land and Soil, (2020). ALC survey for link road. Appendix 10.4. Natural England (2016). Agricultural Land Classification detailed Post 1988 ALC survey, Boddington, Gbs Structure Plan (ALCB12094). Accessed on 22nd March 2021 from <http://publications.naturalengland.org.uk/publication/5108956790784000>
 White Peak Planning (2012). Environmental Statement for 16/02000/OUT | Outline application. Accessed on 22nd March 2021 from <https://www.tewkesbury.gov.uk/planning>

SAFETY, HEALTH AND ENVIRONMENTAL INFORMATION	
In addition to the hazards/risks normally associated with the types of work detailed on this drawing, note the following significant residual risks (Reference shall also be made in the design hazard log)	
Construction	None
Maintenance / Cleaning	None
Use	None
Decommission / Demolition	None

LEGEND <div style="margin-bottom: 5px;"> ORDER LIMITS </div> <div style="margin-bottom: 5px;"> ALC SURVEY UNDERTAKEN AS PART OF THE SCHEME INCLUDED IN APPENDIX 10.4 </div> <div style="margin-bottom: 5px;"> ALC SURVEY UNDERTAKEN DURING ELMS PARK DEVELOPMENT FROM WHITE PEAK PLANNING LTD ENVIRONMENTAL STATEMENT </div> <p>* WHERE NEITHER DOTTED OR DASHED LINES ARE RECORDED REFERS TO PUBLISHED ALC INFORMATION FROM NATURAL ENGLAND /MAGIC: POST 1988 AGRICULTURAL LAND CLASSIFICATION</p>	SITE SURVEY HAND AUGER SAMPLE POINTS <div style="margin-bottom: 5px;"> ● GRADE 3A </div> <div style="margin-bottom: 5px;"> ● GRADE 3B </div> AGRICULTURAL LAND CLASSIFICATION <div style="margin-bottom: 5px;"> GRADE 1 </div> <div style="margin-bottom: 5px;"> GRADE 2 </div>	<div style="margin-bottom: 5px;"> GRADE 3A </div> <div style="margin-bottom: 5px;"> GRADE 3B </div> <div style="margin-bottom: 5px;"> GRADE 4 </div> <div style="margin-bottom: 5px;"> GRADE 5 </div> <div style="margin-bottom: 5px;"> NOT SURVEYED </div> <div style="margin-bottom: 5px;"> OTHER </div>	AGRICULTURAL LAND CLASSIFICATION (PROVISIONAL) <div style="margin-bottom: 5px;"> GRADE 1 - EXCELLENT </div> <div style="margin-bottom: 5px;"> GRADE 2 - VERY GOOD </div> <div style="margin-bottom: 5px;"> GRADE 3 - GOOD TO MODERATE </div> <div style="margin-bottom: 5px;"> GRADE 4 - POOR </div> <div style="margin-bottom: 5px;"> LAND PREDOMINANTLY IN URBAN USE </div>	<p>AGRICULTURAL LAND CLASSIFICATION GRADES 1, 2 AND 3A ARE BEST AND MOST VERSATILE</p>	<table border="1" style="width:100%; border-collapse: collapse; font-size: 8px;"> <tr> <td colspan="7">Description</td> <td rowspan="2">Drawing Suitability</td> <td rowspan="2">Status</td> <td rowspan="2">Project Title</td> </tr> <tr> <td>Status</td> <td>Revision</td> <td>Drawn</td> <td>Checked</td> <td>Reviewed</td> <td>Authorised</td> <td>Issue Date</td> </tr> <tr> <td colspan="7">Description</td> <td rowspan="2">PUBLISHED</td> <td rowspan="2">A1</td> <td rowspan="2">M5 Junction 10 Improvements Scheme</td> </tr> <tr> <td>Status</td> <td>Revision</td> <td>Drawn</td> <td>Checked</td> <td>Reviewed</td> <td>Authorised</td> <td>Issue Date</td> </tr> <tr> <td colspan="7">Description</td> <td rowspan="2"> Member of the SNC-Lavalin Group Tel: 08000 514 514 www.atkinsglobal.com </td> <td rowspan="2"></td> <td rowspan="2">Figure 10-3a - Agricultural Land Classification in the surrounding area</td> </tr> <tr> <td>Status</td> <td>Revision</td> <td>Drawn</td> <td>Checked</td> <td>Reviewed</td> <td>Authorised</td> <td>Issue Date</td> </tr> <tr> <td colspan="7">Description</td> <td rowspan="2"> Gloucestershire COUNTY COUNCIL </td> <td rowspan="2"></td> <td rowspan="2">Drawing Number</td> </tr> <tr> <td>Status</td> <td>Revision</td> <td>Drawn</td> <td>Checked</td> <td>Reviewed</td> <td>Authorised</td> <td>Issue Date</td> </tr> <tr> <td colspan="7">Description</td> <td rowspan="2"> Project: GCCM5J10 - ATK - EGT Originator: ZZ - DR- LM - 400001 Volume: </td> <td rowspan="2"></td> <td rowspan="2">Drawing Title</td> </tr> <tr> <td>Status</td> <td>Revision</td> <td>Drawn</td> <td>Checked</td> <td>Reviewed</td> <td>Authorised</td> <td>Issue Date</td> </tr> <tr> <td colspan="7">Description</td> <td rowspan="2"> Client: </td> <td rowspan="2"></td> <td rowspan="2">Drawing Number</td> </tr> <tr> <td>Status</td> <td>Revision</td> <td>Drawn</td> <td>Checked</td> <td>Reviewed</td> <td>Authorised</td> <td>Issue Date</td> </tr> <tr> <td colspan="7">Description</td> <td rowspan="2"> Location: </td> <td rowspan="2"></td> <td rowspan="2">Drawing Number</td> </tr> <tr> <td>Status</td> <td>Revision</td> <td>Drawn</td> <td>Checked</td> <td>Reviewed</td> <td>Authorised</td> <td>Issue Date</td> </tr> <tr> <td colspan="7">Description</td> <td rowspan="2"> Scale: 1:15,000 </td> <td rowspan="2"></td> <td rowspan="2">Drawing Number</td> </tr> <tr> <td>Status</td> <td>Revision</td> <td>Drawn</td> <td>Checked</td> <td>Reviewed</td> <td>Authorised</td> <td>Issue Date</td> </tr> <tr> <td colspan="7">Description</td> <td rowspan="2"> Project Ref: 5214106 </td> <td rowspan="2"></td> <td rowspan="2">Drawing Number</td> </tr> <tr> <td>Status</td> <td>Revision</td> <td>Drawn</td> <td>Checked</td> <td>Reviewed</td> <td>Authorised</td> <td>Issue Date</td> </tr> <tr> <td colspan="7">Description</td> <td rowspan="2"> Sheet: 1 of 1 </td> <td rowspan="2"></td> <td rowspan="2">Drawing Number</td> </tr> <tr> <td>Status</td> <td>Revision</td> <td>Drawn</td> <td>Checked</td> <td>Reviewed</td> <td>Authorised</td> <td>Issue Date</td> </tr> <tr> <td colspan="7">Description</td> <td rowspan="2"> Rev: P02 </td> <td rowspan="2"></td> <td rowspan="2">Drawing Number</td> </tr> <tr> <td>Status</td> <td>Revision</td> <td>Drawn</td> <td>Checked</td> <td>Reviewed</td> <td>Authorised</td> <td>Issue Date</td> </tr> </table>	Description							Drawing Suitability	Status	Project Title	Status	Revision	Drawn	Checked	Reviewed	Authorised	Issue Date	Description							PUBLISHED	A1	M5 Junction 10 Improvements Scheme	Status	Revision	Drawn	Checked	Reviewed	Authorised	Issue Date	Description							 Member of the SNC-Lavalin Group Tel: 08000 514 514 www.atkinsglobal.com		Figure 10-3a - Agricultural Land Classification in the surrounding area	Status	Revision	Drawn	Checked	Reviewed	Authorised	Issue Date	Description							 Gloucestershire COUNTY COUNCIL		Drawing Number	Status	Revision	Drawn	Checked	Reviewed	Authorised	Issue Date	Description							Project: GCCM5J10 - ATK - EGT Originator: ZZ - DR- LM - 400001 Volume:		Drawing Title	Status	Revision	Drawn	Checked	Reviewed	Authorised	Issue Date	Description							Client:		Drawing Number	Status	Revision	Drawn	Checked	Reviewed	Authorised	Issue Date	Description							Location:		Drawing Number	Status	Revision	Drawn	Checked	Reviewed	Authorised	Issue Date	Description							Scale: 1:15,000		Drawing Number	Status	Revision	Drawn	Checked	Reviewed	Authorised	Issue Date	Description							Project Ref: 5214106		Drawing Number	Status	Revision	Drawn	Checked	Reviewed	Authorised	Issue Date	Description							Sheet: 1 of 1		Drawing Number	Status	Revision	Drawn	Checked	Reviewed	Authorised	Issue Date	Description							Rev: P02		Drawing Number	Status	Revision	Drawn	Checked	Reviewed	Authorised	Issue Date
	Description							Drawing Suitability	Status	Project Title																																																																																																																																																																																						
	Status	Revision	Drawn	Checked	Reviewed	Authorised	Issue Date																																																																																																																																																																																									
	Description							PUBLISHED	A1	M5 Junction 10 Improvements Scheme																																																																																																																																																																																						
Status	Revision	Drawn	Checked	Reviewed	Authorised	Issue Date																																																																																																																																																																																										
Description							 Member of the SNC-Lavalin Group Tel: 08000 514 514 www.atkinsglobal.com		Figure 10-3a - Agricultural Land Classification in the surrounding area																																																																																																																																																																																							
Status	Revision	Drawn	Checked	Reviewed	Authorised	Issue Date																																																																																																																																																																																										
Description							 Gloucestershire COUNTY COUNCIL		Drawing Number																																																																																																																																																																																							
Status	Revision	Drawn	Checked	Reviewed	Authorised	Issue Date																																																																																																																																																																																										
Description							Project: GCCM5J10 - ATK - EGT Originator: ZZ - DR- LM - 400001 Volume:		Drawing Title																																																																																																																																																																																							
Status	Revision	Drawn	Checked	Reviewed	Authorised	Issue Date																																																																																																																																																																																										
Description							Client:		Drawing Number																																																																																																																																																																																							
Status	Revision	Drawn	Checked	Reviewed	Authorised	Issue Date																																																																																																																																																																																										
Description							Location:		Drawing Number																																																																																																																																																																																							
Status	Revision	Drawn	Checked	Reviewed	Authorised	Issue Date																																																																																																																																																																																										
Description							Scale: 1:15,000		Drawing Number																																																																																																																																																																																							
Status	Revision	Drawn	Checked	Reviewed	Authorised	Issue Date																																																																																																																																																																																										
Description							Project Ref: 5214106		Drawing Number																																																																																																																																																																																							
Status	Revision	Drawn	Checked	Reviewed	Authorised	Issue Date																																																																																																																																																																																										
Description							Sheet: 1 of 1		Drawing Number																																																																																																																																																																																							
Status	Revision	Drawn	Checked	Reviewed	Authorised	Issue Date																																																																																																																																																																																										
Description							Rev: P02		Drawing Number																																																																																																																																																																																							
Status	Revision	Drawn	Checked	Reviewed	Authorised	Issue Date																																																																																																																																																																																										

AtkinsRéalis

5th Floor, Block 5
Shire Hall
Bearland
Gloucester
GL1 2TH

Tel: +44 (0) 8000 514 514